



**LE COSTA**  
Classic Wooden Yachts

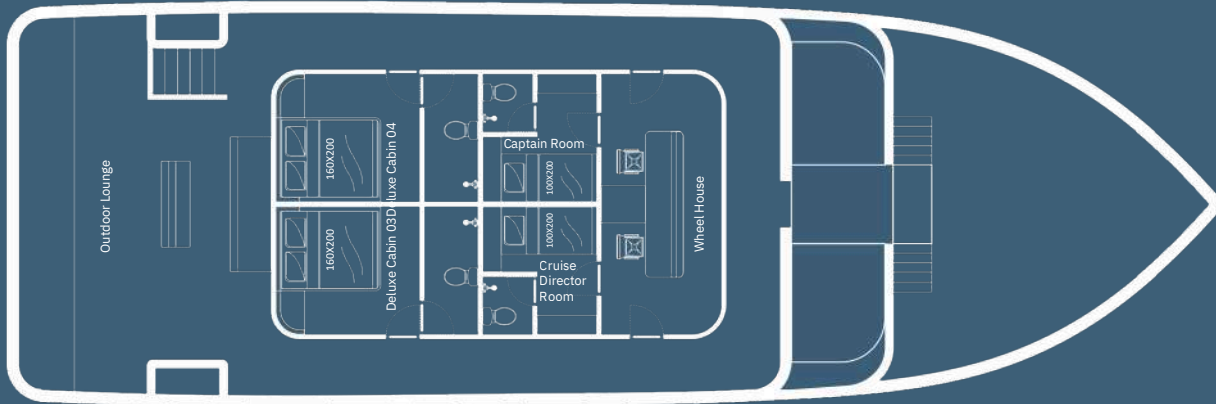
# About Us

Le Costa was designed in 2021 by Indonesian Naval Architect. It should be a traditional cargo boat for the copra in Sumatra Island. We decided to change the purpose due pandemic condition. It has unobtrusively refinements to enhance her intrinsic stability and beauty and called a classic wooden yachts.

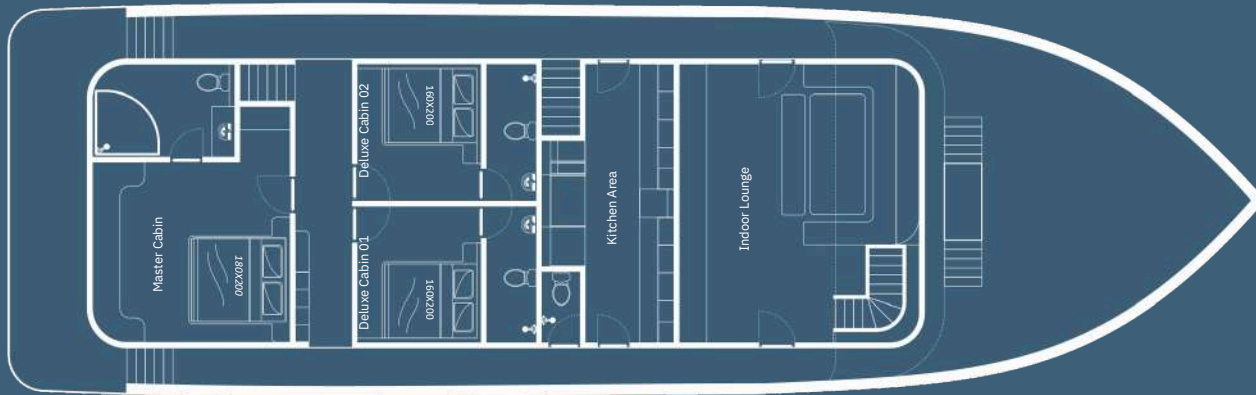
Le Costa could carry 14 passengers with 6 cabin en-suite bathroom, spacious area for sunbathing and 14 crew who will make your holiday memorable and the most important thing is comfortable and safe.

Let us be your part of journey in blue water Indonesia archipelago





Upper Deck



Main Deck

## Specification

Beam	: 8,45 m
Length Overall	: 27,80 m
Draft	: 2,8 m
Cruising Speed.	: 7 knot
Main Engine.	: Yanmar - 6HYM 500hp
Generators.	: - Mitsubishi 2 x 50 kVa - Portable 12kVa
Fuel Capacity	: 12000 L
Water Capacity	: 15000 L
Guests	: 14 Guests

## Safety Equipment

Live vest, Life Raft, Life Buoy  
 Fire Extinguisher  
 Marine Radio (VHF & SSB)  
 EPIRB  
 SART

### CABIN INFORMATION Room Type ( 6 Cabins )

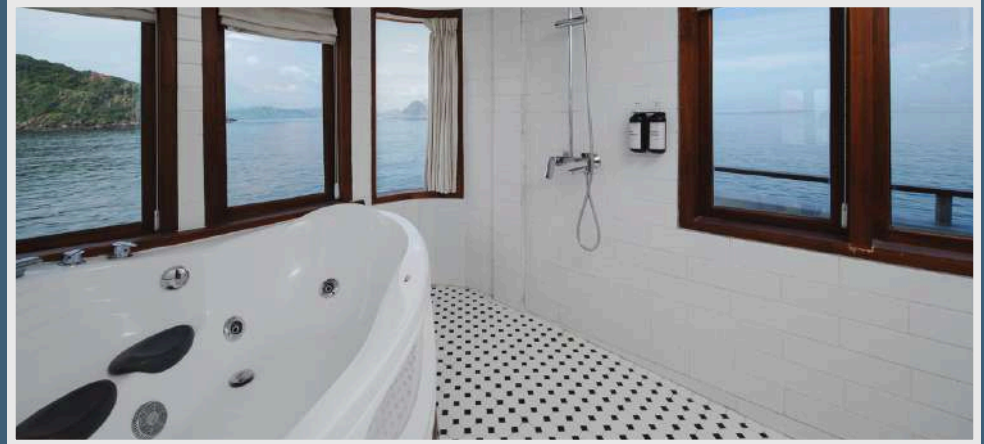
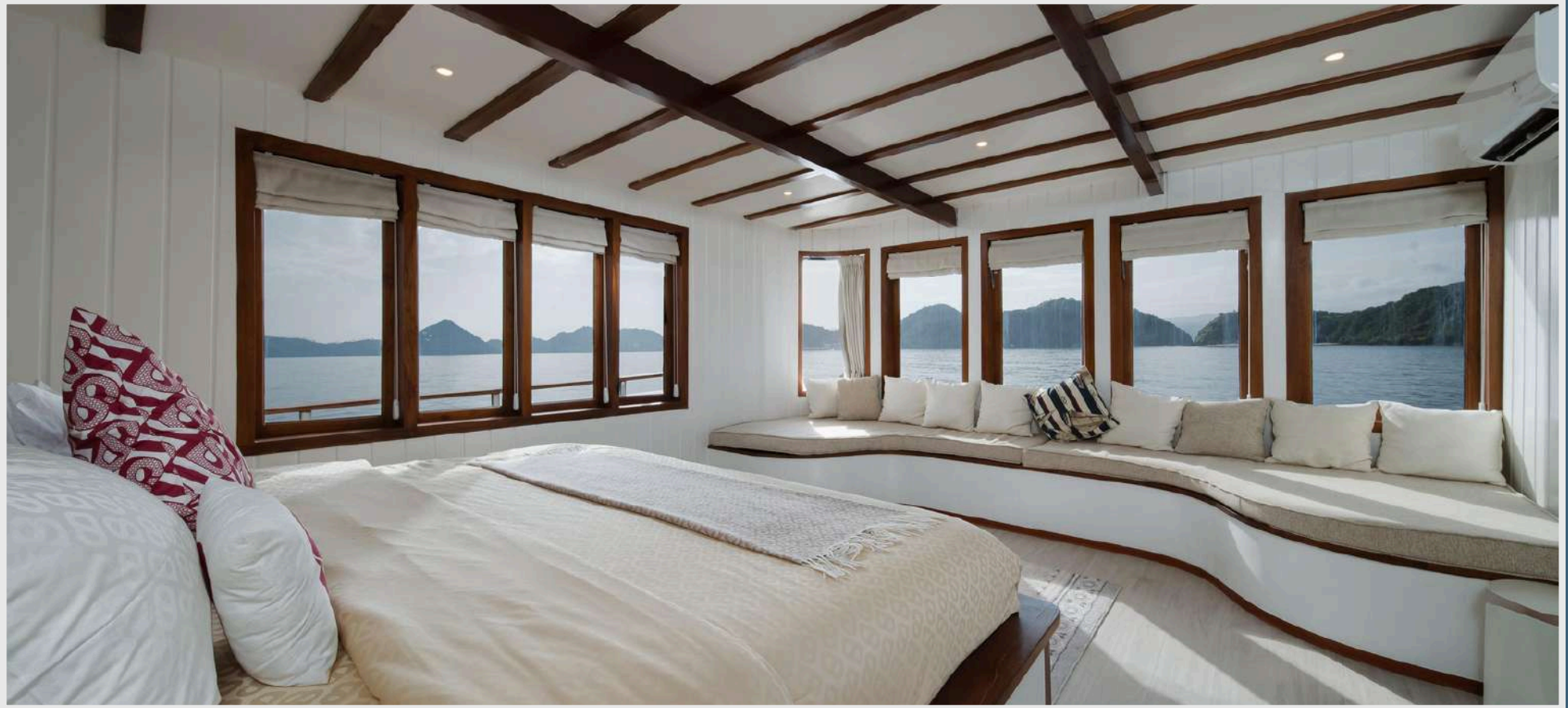
- 1 x Master Cabin** (Main Deck)
- Super King Bed 200 x 200
  - Private Bathroom + Jacuzzi

- 1 x Family Cabin** (Lower Deck)
- 2x Queen Bed (160 x 200)
  - Private Bathroom

- 4 x Double Bed Cabin** (Upper & Main Deck)
- Queen Bed (160 x 200)
  - Private Bathroom

*Each of 6 cabins are Equipped with ensuite bathrooms, amenities, water heater, and air conditioning.*

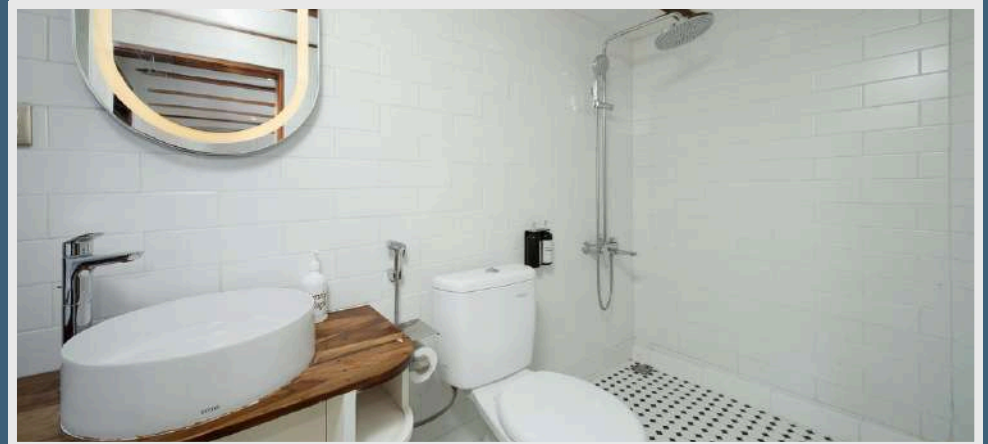
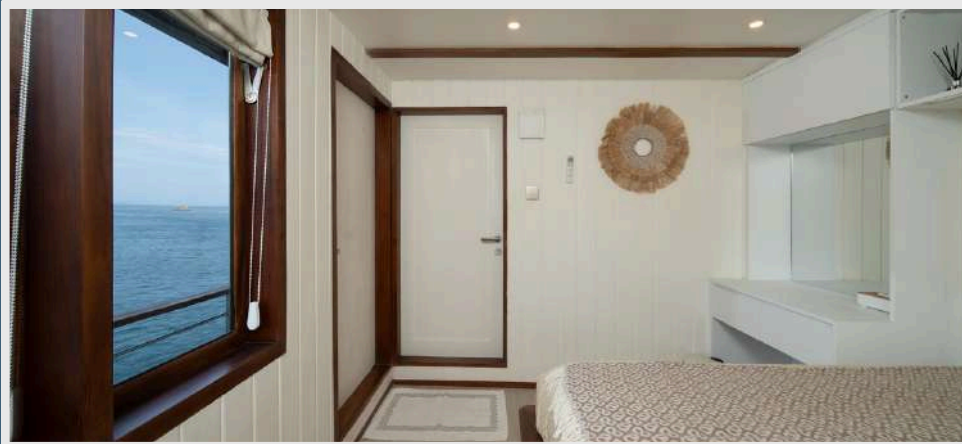
# SANTORINI - MAIN DECK



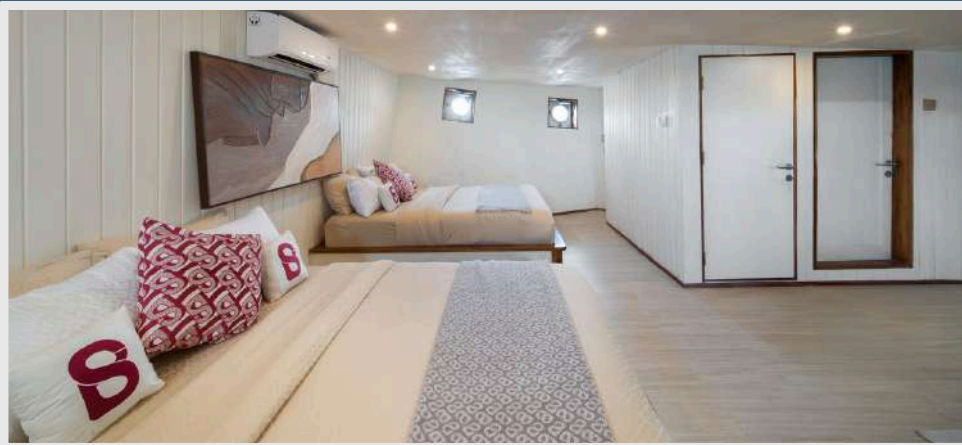
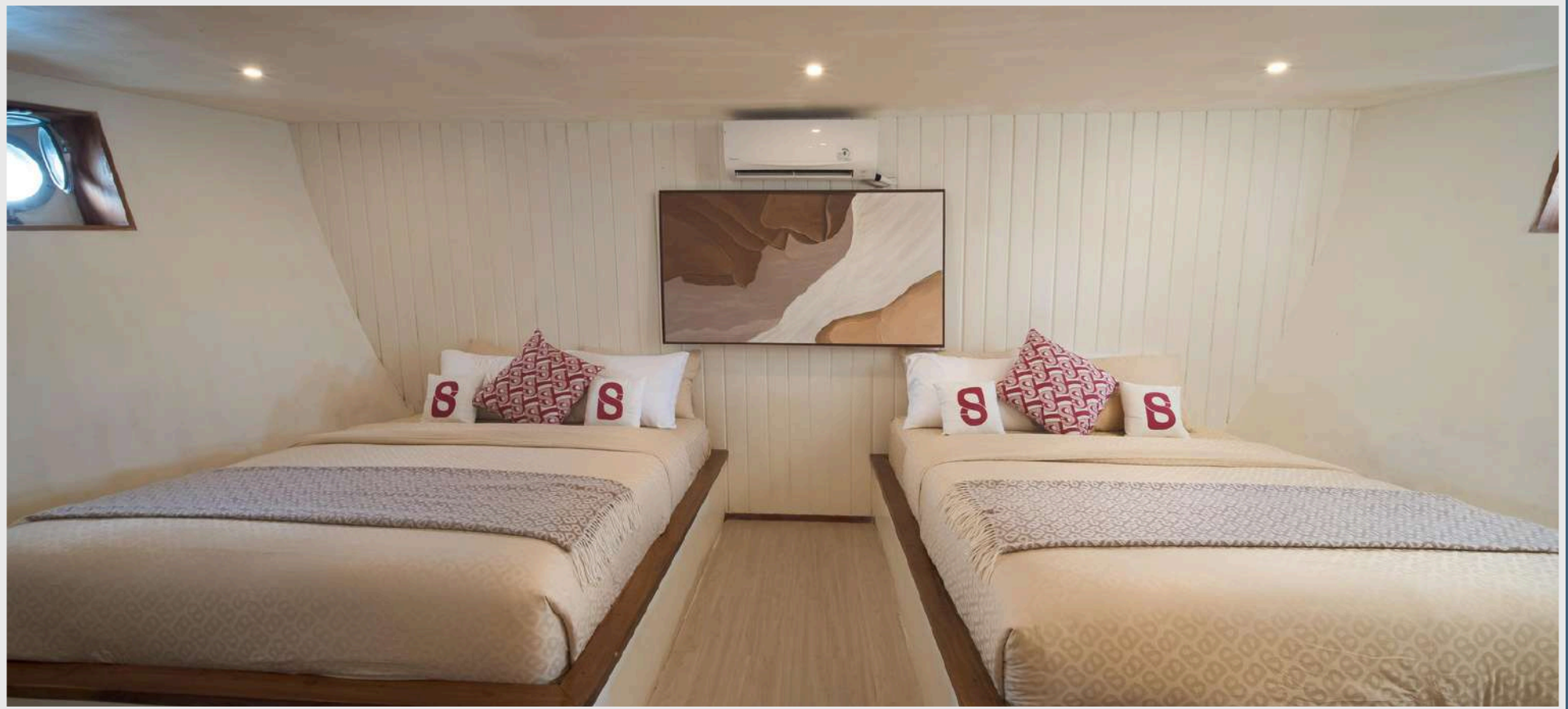
# CAPRI ||| MARBELLA - MAIN DECK



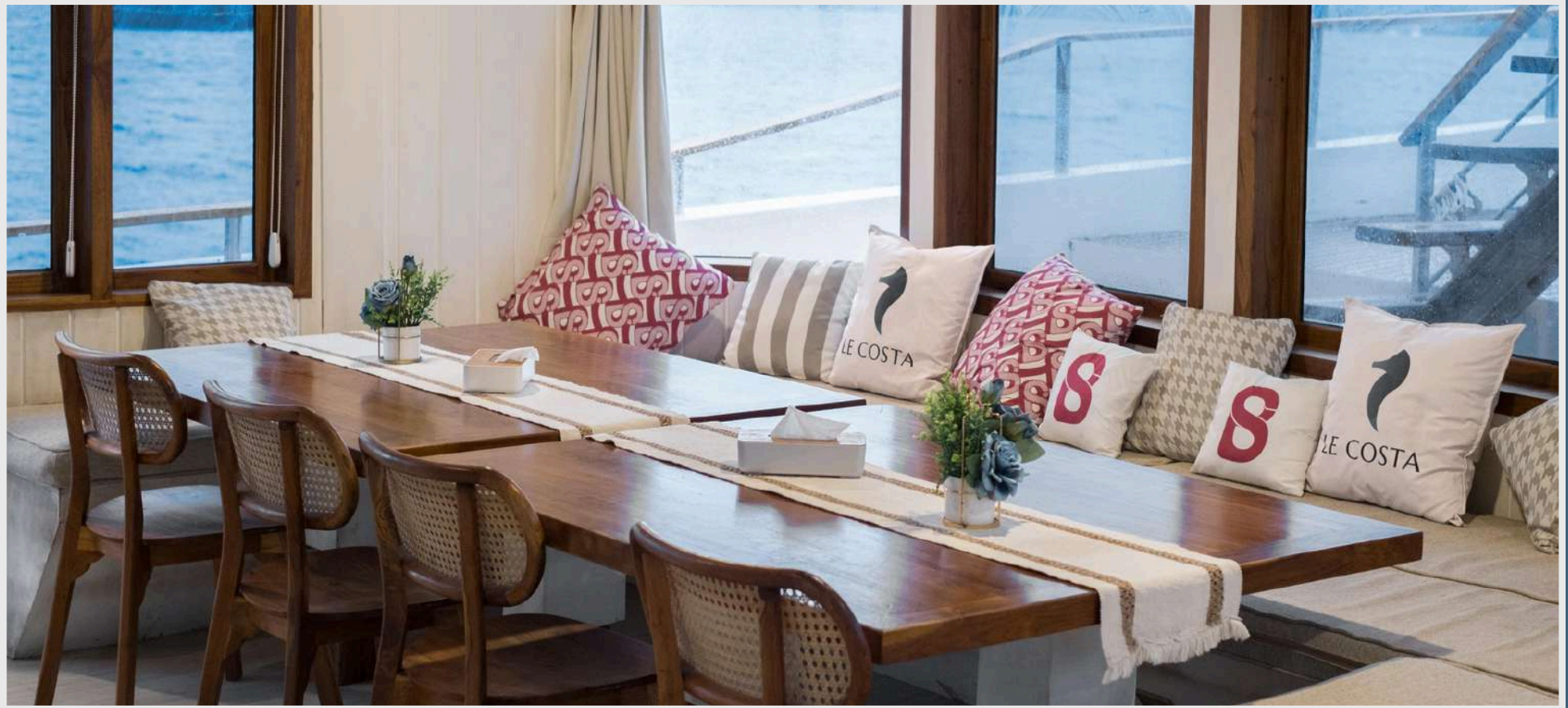
# IBIZA || MONACO - UPPER DECK



# PORTOFINO - LOWER DECK



# LOUNGE AREA



# BAR & OPEN AREA



# BAR & OPEN AREA





More Pictures

[CLICK HERE >](#)

Schedules

[CLICK HERE >](#)

<b>2026</b>	<b>SANTORINI</b>	<b>CAPRI   MARBELA IBIZA   MONACO</b>	<b>PORTOFINO</b>
<b>4D3N</b>	<b>Rp 40.000.000</b>	<b>Rp 35.000.000</b>	<b>Rp 37.000.000</b>

- Rates 2 person for Master and Deluxe Cabin
- Portofino rates for 4 person

## Inclusions

- Meals on board
- Afternoon tea
- Freeflow water
- Soft drinks
- Snorkeling gear
- Stand up Paddle board
- Towels and amenities
- Wi-Fi, TV, Karaoke Set
- Sofa bed every single deck
- Transfer in/out harbour
- Documentation
- Cruise Director



## Exclusions

- Flights
- Travel Insurance
- Personal need and expenses
- Alcohol drink (Beer, Wine & Spirits)
- Komodo National Park Entrance Fee
- Crew gratitude

## Things to bring

- Hat
- Sunglasses
- Sunblock
- Swimsuit
- Personal drugs
- Backpack

# Itinerary

## 4 Days 3 Nights (First Options)

Day 1 - Monday (Embarkation 09.00)

- Bidadari Island (Snorkeling)
- Sebayur Island (Snorkeling)
- Gili Lawa Darat (Trekking)

Day 2 - Tuesday

- Taka Makassar (Sightseeing)
- Manta Point (Snorkeling)
- Pink Beach (Snorkeling)
- Komodo Island (Trekking)

Day 3 - Wednesday

- Padar Island (Trekking)
- Pengah Island (Snorkeling)
- Kalong Island (Sightseeing)

Day 4 - Thursday (Disembarkation 10.00)

- Kelor Island (Trekking)

## 4 Days 3 Nights (Second Options)

Day 1 - Thursday (Embarkation 14.00)

- Kelor Island (Trekking)
- Menjerite Jetty (Snorkeling)
- Kalong Island (Sightseeing)

Day 2 - Friday

- Padar Island (Trekking)
- Pink Beach (Snorkeling)
- Komodo Island (Trekking)

Day 3 - Saturday

- Taka Makassar (Sightseeing)
- Manta Point (Snorkeling)
- Siaba Island (Snorkeling)

Day 4 - Sunday (Disembarkation 15.00)

- Sebayur Island (Snorkeling)
- Bidadari Island (Snorkeling)

- Itineraries and arranged sightseeing are subject to change at any time due to unforeseen circumstances or circumstances beyond our control. Every effort will be made to operate tours as planned, but alterations may occur after the final itinerary has been issued.
- Flight arrival at Labuan Bajo should be one day before the embarkation for Monday departure, and flight same day for disembarkation on Thursday afternoon
- Flight same day on Thursdays departure and late afternoon flight on Sunday disembarkation.

# Terms & Condition

## MINIMUM QUOTATION

Open trip will run as scheduled if there are 2 cabins occupied. If Le Costa only gets one room on the schedule, it will be suggested to the nearest departure schedule. Le Costa will provide the latest news regarding the number of participants within a maximum of 2 weeks before departure.

## PRICE

Third person charge (Portofino, Santorini, Ibiza, & Monaco)

- 4D3N
  - Adults : Rp 9.000.000 / person
  - 12 - 17 yo : Rp 9.000.000 / person
  - 5 - 11 yo : Rp 5.000.000 / person
  - Under 5 yo : Free

Prices are based on current rates of exchange, tariffs and taxes. We reserve the right to increase tour prices to cover increased costs, tariffs and taxes, and to reflect fluctuations in foreign exchange markets. We also reserve the right to withdraw a tour or any part of it to make such alterations in the itinerary or with the tour inclusions as it deems necessary or desirable and to pass on to tour members any expenditures or losses caused by delays or even.

## REGISTRATION AND PAYMENT

A deposit of 50% is required at the time of booking. We accept payment via wire transfer or money order for your deposit. The balance is due 90 days prior to departure. If your reservation is made within 90 days of departure, the entire cost of the trip must be paid at the time of confirmation.

## CANCELLATION

If a cancellation is made: 30 days or more prior to departure 50% of the fee will be forfeited. 29 days or less prior to departure 100% of the fee will be forfeited.

a Special Covid 19 Policy

The Parties hereby agree that should an official governmental restriction, be issued prior to the embarkation date either in the charter destination or to/from the Charterer's state and country of residence, preventing the client from being able to embark on boat, a full reimbursement of funds received by Le Costa will be made within 14 days of the date of commencement of the charter.

# Terms & Condition

## **REFUNDS**

Refunds are not made for any missed services, except for verifiable extenuating circumstances. Please see our Limits on Responsibility on this page. For verifiable claims to be considered, they must be received in writing within 30 days of the termination of the program and be accompanied by supporting documentation and/or a statement from the Operating Company verifying the claim. Any adjustment considered will be based on the actual price of the services involved and not on a per diem basis. Adjustments will not be made for unused sightseeing trips or meals. We will not accept any liability for any claims that are not received within 30 days of the termination of your travel program. All claims for days missed while travelling should be made in writing within 30 days of the termination of the program.

## **RESPONSIBILITY**

We will not take responsibilities to any loss, damages, flight cancellation, delay or any other personal accident beyond our control. Help surely will be given if it's necessary.

## **TRAVEL INSURANCE**

To avoid any risk during on the trip, we suggested that participants have on their own insurance, which should cover, medical, lose of money, personal accident and personal liability, surgical and dental and additional expenses, baggage etc.

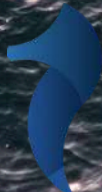
## **DISABILITIES AND BEHAVIOR**

By paying the Deposit you certify that you do not have any mental, physical or other condition or disability that could create a hazard for you or other passengers on board Le Costa. We reserve the right to require you to leave Le Costa immediately if you cause danger or disruption to the orderly management of Le Costa or cause significant offence or disturbance to other Guests or crew on board Le Costa or breach any law .

## **AGREEMENT**

You agree you have read these terms and conditions set forth above in their entirety and understand them and accept them unconditionally. You further agree to observe strictly and comply with any additional reasonable terms and regulations as we may from time to time deem desirable or needful or prescribe during the course of the Cruise.

LE COSTA  
buttonscarves



**LE COSTA**  
Classic Wooden Yachts